

Release Letter/新功能釋出通知

New **Line Output** method is released for laser engraved process. Different from old Line Output, new Line Output will generate **continuous** vertical, horizontal, or both lines in one output file. **Each vertical, horizontal, and border line can be set as different color and you can set different laser power and laser speed for each line.**

New version BacklightFly also improves the dot random distribution rule. It will make dot distribution really random. Comparing with previous version, you may find some difference in Same Pitch Output-Fine Grained2 and Same Pitch Output-Resterization (<10 dot count and position difference), but it will not affect the product taste.

In old version, laser machine cannot to handle the dash line shape output form FineGrained & Regular Output Method. But in new version, we revised the code setting of dash line and your laser machine will handle it easily.

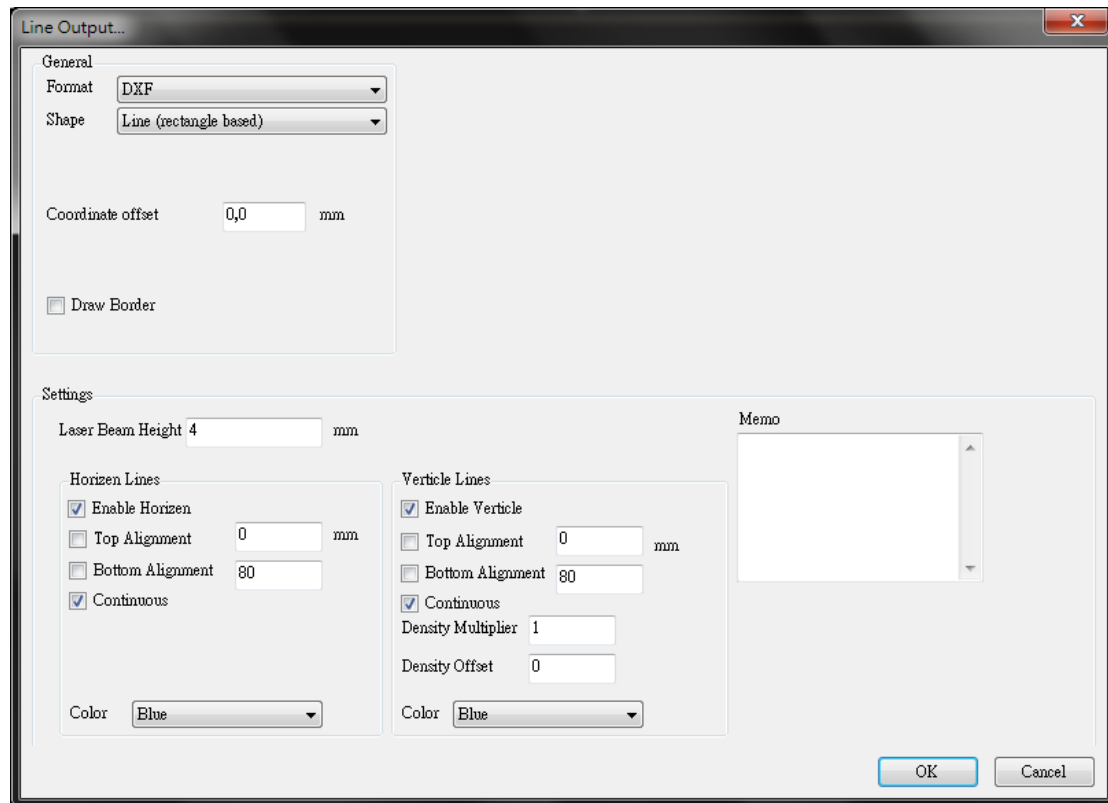
針對雷射切割製成，我們釋出了新的**線段輸出**方式。不同於舊版的線段輸出，新版的線段輸出方式可以產生**連續性**的直線、橫線或兩者並存。此外，您可為橫直線分別設定**不同顏色**，如此在雷射製程時，便可為不同條線設定不同的雷射能量及雷射移動速度。

新版的 BacklightFly 也修改了亂數分布的法則。新的法則讓佈點分布更接近亂數。和舊版的比較，您可能會發現在 Same Size 輸出-細緻化 2 及 Same Size 輸出-點陣化中發現些許不同(小於十顆佈點數目及位置差異)，但這將不會影響產品品味。

在舊版中，細緻化輸出及 Regular 輸出的虛線圖形，雷射機台是無法平順的處理。在新版中，我們修改了虛線的設定，使得雷射機台可以輕易的處理虛線圖形。

Line Output

Route: File > Output > Line Output



General

Format: Only DXF

Shape: Only Line (rectangle based)

Coordinate offset: Offset origin coordinate

Draw Border: If mark to enable, the black border will be drawn in result.

Settings

Laser Beam Height: Set the minimum spacing for density=1

Horizon/Vertical Lines:

Enable Horizon/Vertical: Mark it if you want to draw

Top Alignment: If mark it, the top line will be drawn on the position you assigned. (For Vertical Line, top means left side)

Bottom Alignment: If mark it, the bottom line will be drawn on the position you assigned. (For Vertical Line, bottom means right side)

Continuous: If mark it, all horizon/vertical lines will be connected.

Density Multiplier: Only for vertical lines. You can adjust the spacing of vertical line by multiplying a number. The minimum spacing can be only same with Laser

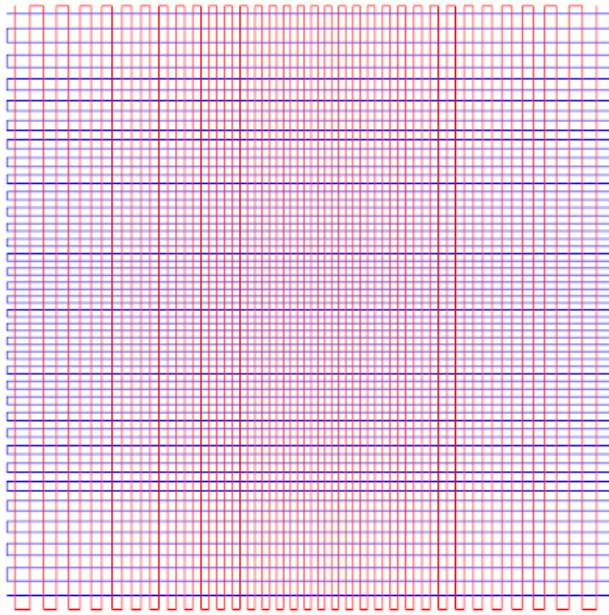
Beam Height.

Density Offset: The number of vertical lines can be adjusted by increasing or reducing density here. If density is over than 1, the spacing between vertical line will be the Laser Beam Height.

Color: There are red, blue, yellow for choosing. If you select different colors for horizon and vertical lines, you will be able to set different laser power/speed for engraving process.

Result Example:

Without border



With border

