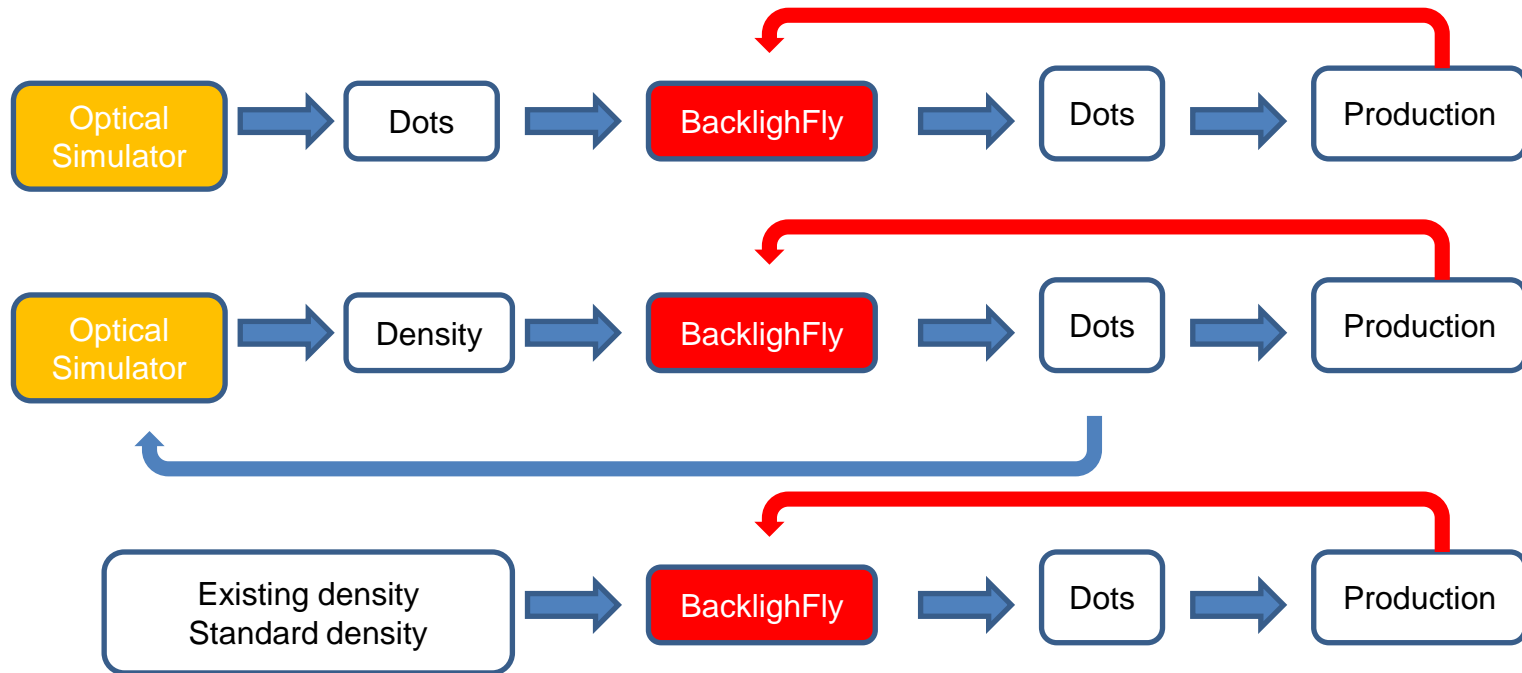


Who needs BacklightFly

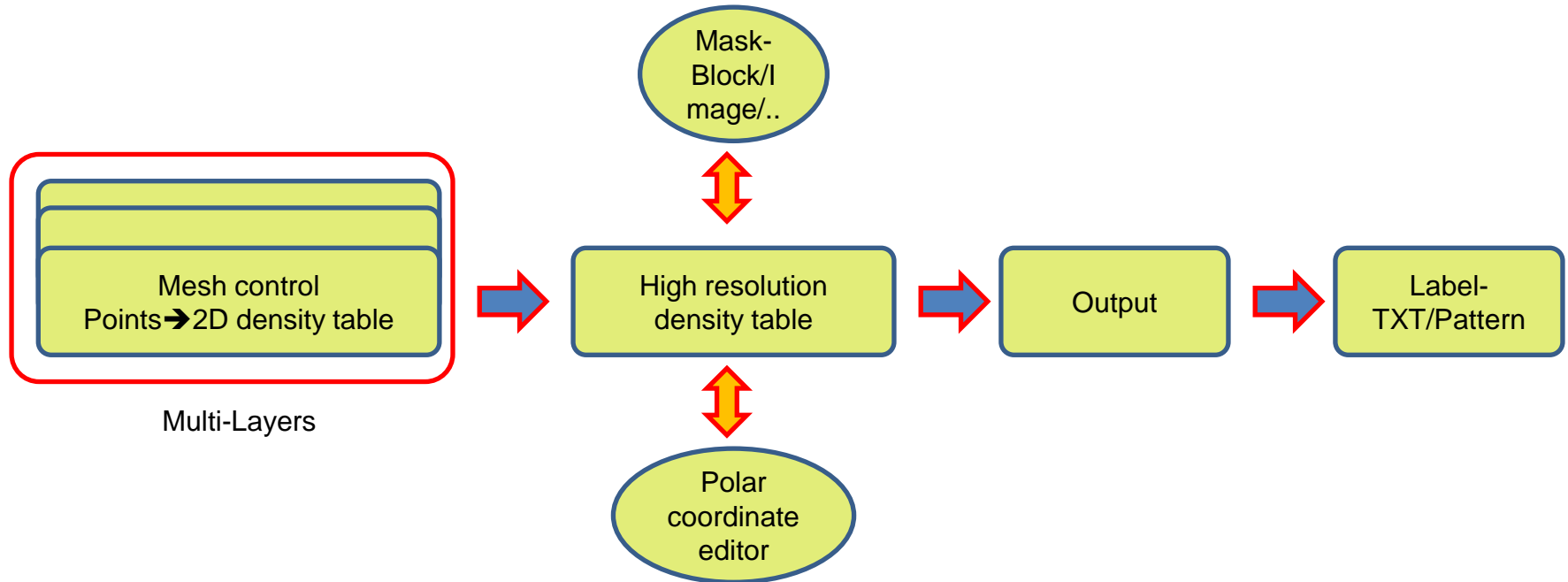
- BacklightFly is a dot generator which can convert your density design to dots Faithfully!
- It is not a optical simulation tool and couldn't tell you output optical result.
- A lot of people use it for backlight design by run to run modification without simulation tools.
- Backlight designers need it to adjust density design and convert to dots.
- It provides very easy and useful tools to achieve your density design.



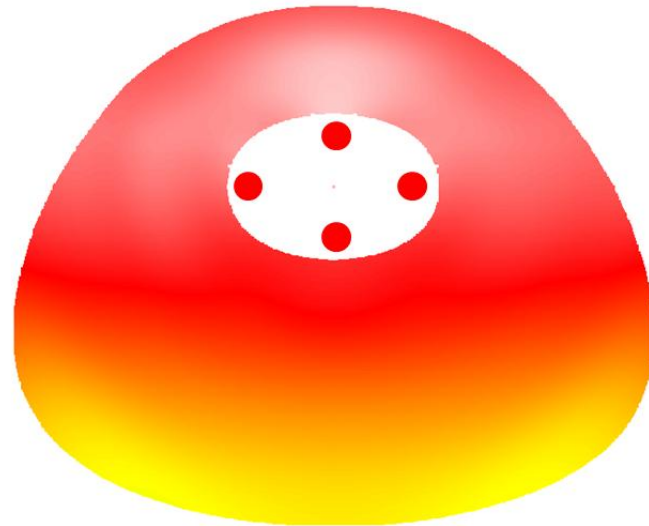
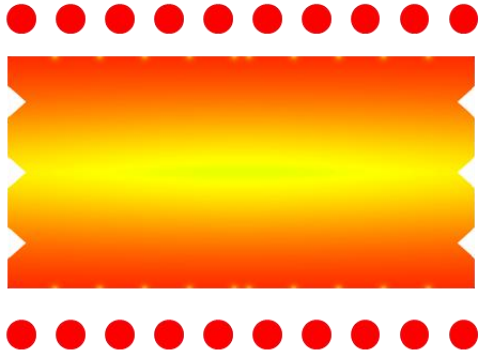
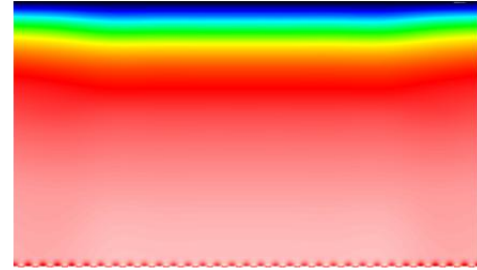
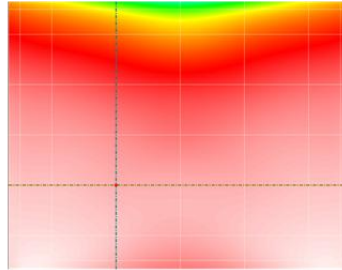
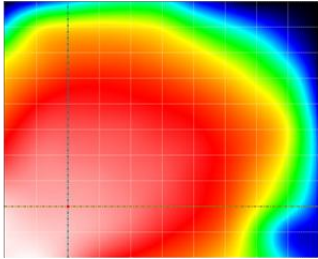
The essences of backlight design

- Smoothly density profile
- Easy to modify density.
- What you design and what you get(Faithful convert)!
- Good dots distribution.

Architecture of BacklighFly



Samples



Output

